

# Cynomolgus/Rhesus macaque PD-L1/B7-H1 Protein

Cat. No. PDL-CM110

## Description

<b>Source</b>	Recombinant Cynomolgus/Rhesus macaque PD-L1/B7-H1 Protein is expressed from HEK293 with His tag at the C-Terminus. It contains Phe19-Arg238.
<b>Accession</b>	G7PSE7
<b>Molecular Weight</b>	The protein has a predicted MW of 26 kDa. Due to glycosylation, the protein migrates to 35-45 kDa based on Bis-Tris PAGE result.
<b>Endotoxin</b>	Less than 1EU per µg by the LAL method.
<b>Purity</b>	> 95% as determined by Bis-Tris PAGE > 95% as determined by HPLC

## Formulation and Storage

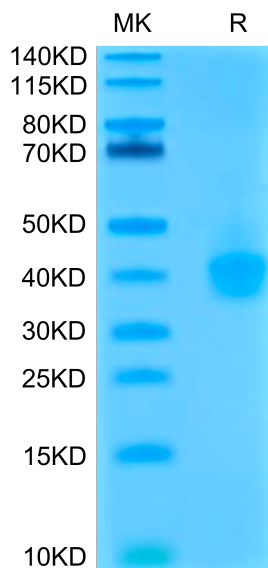
<b>Formulation</b>	Lyophilized from 0.22µm filtered solution in PBS (pH 7.4). Normally 8% trehalose is added as protectant before lyophilization.
<b>Reconstitution</b>	Centrifuge the tube before opening. Reconstituting to a concentration more than 100 µg/ml is recommended. Dissolve the lyophilized protein in distilled water.
<b>Storage</b>	-20 to -80°C for 12 months as supplied from date of receipt. -80°C for 3 months after reconstitution. Recommend to aliquot the protein into smaller quantities for optimal storage. Please minimize freeze-thaw cycles.

## Background

B7-H1, also known as PD-L1 and CD274, is an approximately 65 kDa transmembrane glycoprotein in the B7 family of immune regulatory molecules. PD-L1 has been identified as the ligand for the immunoinhibitory receptor programmed death-1(PD1/PDCD1) and has been demonstrated to play a role in the regulation of immune responses and peripheral tolerance.

## Assay Data

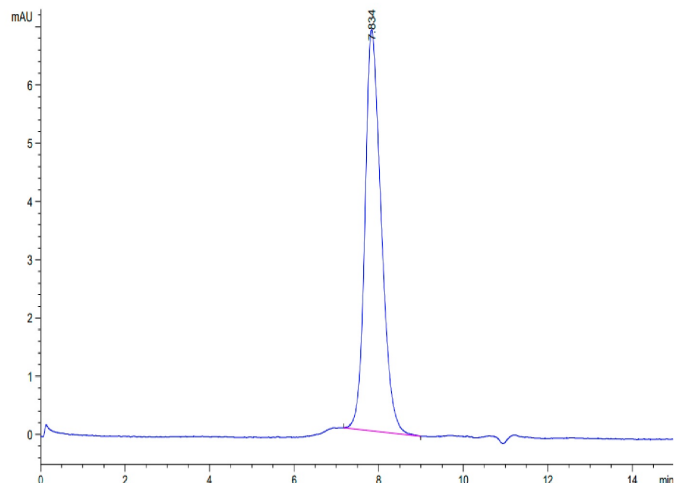
### Bis-Tris PAGE



Cynomolgus/Rhesus macaque PD-L1 on Bis-Tris PAGE under reduced condition. The purity is greater than 95%.

### SEC-HPLC

Assay Data

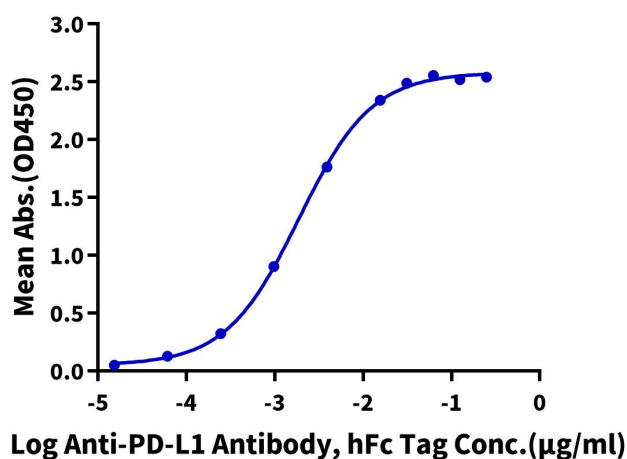


The purity of Cynomolgus/Rhesus macaque PD-L1 is greater than 95% as determined by SEC-HPLC.

ELISA Data

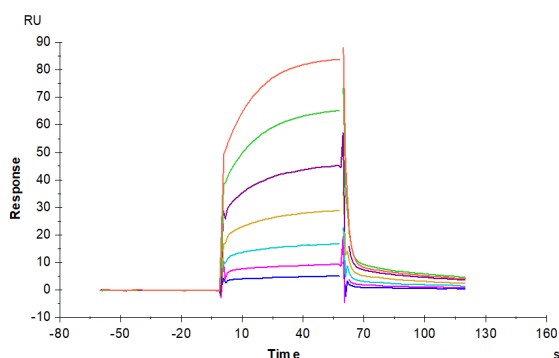
**Cynomolgus/Rhesus macaque PD-L1, His Tag ELISA**

0.1 µg Cynomolgus/Rhesus macaque PD-L1, His Tag Per Well



Immobilized Cynomolgus/Rhesus macaque PD-L1, His Tag at 1 µg/ml (100 µl/Well) on the plate. Dose response curve for Anti-PD-L1 Antibody, hFc Tag with the EC50 of 1.9 ng/ml determined by ELISA (QC Test).

SPR Data



Cynomolgus PD-1, hFc Tag captured on CM5 Chip via Protein A can bind Cynomolgus/Rhesus macaque PD-L1, His Tag with an affinity constant of 1.28 µM as determined in SPR assay (Biacore T200).